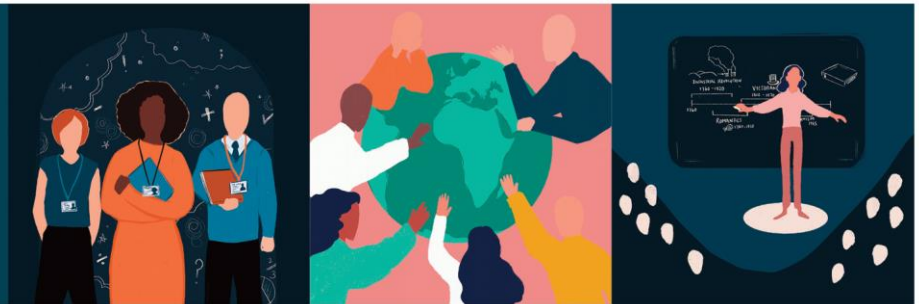




Events



ISSUE 1

Thursday 28 September 2023
Autumn Term Issue

Continuing Professional Development Offers from SWIFT & Our Partners

High quality CPD at affordable rates to enhance professional development in your school.
Access through your SWIFT Membership package at no charge and/or discounted rates.
Or as a non-member, you can access the programmes on a pay-as-you-go basis.

[YOU CAN READ HERE TO FIND OUT MORE ABOUT UPCOMING EVENTS AND THANK YOU FOR FORWARDING TO YOUR COLLEAGUES](#)

SWIFT Membership 2023 - 2024

Welcome to SWIFT Membership for 2023 – 2024. We are delighted that so many schools, federations, trusts and other bodies have joined or renewed.

Don't forget that as a member you have unlimited access to the following highlights:

- Free / unlimited access to over 30 termly **subject and leadership professional communities**
- Free / unlimited access to termly **Leadership Forum** and **Curriculum Forum**
- Free / unlimited access to **Primary Subject Leader briefings** for Early Years, Maths, English and Science
- Free **Leadership Study Visits** to schools and trusts within the region and across England (limited places)
- Free access to **Secondary School Performance Analysis** through Jon Lunn (Performance Director for Ted Wragg MAT)
- Members' discount on an extensive range of **professional development courses and conferences** that are part of our Universal Programme.

SWIFT Membership saves staff time as well as money. We have moved to Eventbrite for our booking system, providing quick access to all our events and making it quick and easy to register. Many of the 2023-2024 courses are live for bookings now ([HERE](#)) and many more will be added across the year. Increasingly, schools are using SWIFT to support staff training linked to appraisal, providing a quick, one-stop-shop for staff development needs.

Powering SWIFT Membership is the dynamic SWIFT partnership of schools and trusts that curate, design and facilitate courses, professional communities, forums and conferences. These brilliant teams from across the Devon, Plymouth and Torbay area reflect the best of the school-led system.

It's not too late to join. SWIFT Membership offers schools and trusts outstanding value. Our low-cost, £2 per pupil fee offers you unlimited access.

If you are a federation or trust you can simply register all your schools together and take advantage of the discounts available (See Prospectus [HERE](#))

Contact us

If you have any questions, please contact Abby Spearing, abby.spearing@sw-ift.org.uk



[VIEW ALL COURSES](#) [HERE](#)

COMING SOON | Programmes, Training and Events

Masterclasses and Longer Programmes

SWIFT, as part of its Universal CPD offer to schools, has a range of Masterclasses and Longer Programmes. These are designed to provide in-

depth sets of training for leaders and teachers. They run over the course of a few terms with between 3-5 sessions. Some also have access to online modules. We are able to attract high-calibre national trainers to support current thinking and adaption of practice over time. You will be joining colleagues from a variety of settings to create a network of people that will provide challenge and support as these programmes are applied to your own school context.



- Advanced Coaching Programme | Leonie Burrell
- Refining the Curriculum Masterclass (Secondary and Primary) | Mary Myatt
- Primary Assessment Masterclass | Shirley Clarke
- Developing Character Education | Lyndsey Bolton
- Social Mobility Masterclass (Secondary and Primary) | Sonia Blandford
- Primary Geography Masterclass | David Weatherly and Sheena Wright
- Primary History Masterclass | David Weatherly and Sheena Wright
- Primary English Writing Masterclass | Debra Myhill

REGISTER [HERE](#)

Professional Communities

Professional Communities bring colleagues together to network, connect with leading practice, hear from expert speakers, and provide mutual support. Held termly, our team of Professional Community Leads provide a high level of expertise, enabling the design of high-quality agendas, recruitment of expert speakers and the identification of local expertise. Contributors include leading national voices and key officials from national agencies, including Ofsted and researchers from the Education Endowment Fund (EEF).



- School Business Management Professional Community
- Primary Oracy Professional Community
- Sixth Form Professional Community
- Estates Management Professional Community
- Primary SEND Professional Community
- Secondary SEND Professional Community
- Equality & Diversity Professional Community
- Primary Design & Technology Professional Community
- Secondary Leaders Professional Community
- PSHE Professional Community
- Primary Geography & History Professional Community
- RE Professional Community
- Safeguarding Professional Community
- Primary Curriculum and Assessment Professional Community

FIND MORE INFORMATION [HERE](#)

Primary Subject Leader Briefings

Covering Early Years, Maths, English and Science, Subject Leader Briefings for primaries are designed to provide termly updates, guidance and examples of effective practice, drawing on area and national sources. Briefings are delivered by experts and planned in co-ordination with our Subject Masterclasses and Professional Communities.



- Early Years with Early Excellence
- Science with Allie Beaumont
- English with Danni Cooke | Ilsham English Hub Lead
- Maths with Adam Peters | CODE Maths Hub

REGISTER [HERE](#)

<p>#DiverseEd Events</p> <p>#DiverseEd has evolved into a training company due to the demands of our community. They are committed to moving the agenda forwards regarding Diversity, Equity and Inclusion in our school system and work with state schools, independent schools and international schools to support them with their DEI strategy and their DEI training needs.</p> <p>#DiverseEd Conference 7 October 2023 0900 – 1630 Bristol</p> <p>#DiverseEd Regional Hub Bristol Session 1 Thursday 7 December 2023 1600 - 1730 Session 2 Thursday 8 February 2024 1600 – 1730 Session 3 Thursday 14 March 2024 1600 – 1730 Session 4 Thursday 9 May 2024 1600 – 1730 Session 5 Thursday 20 June 2024 1600 - 1730</p>	<p>Cost</p> <p>£40 + VAT</p> <p>£50 + VAT to attend all 5 sessions</p>	 <p>Register HERE</p> <p>Register HERE</p>
<p>FIND MORE INFORMATION HERE</p>	<p>Bristol</p>	
<p>Whole School Approach to LGBTQ+ in Schools</p> <p>This session will explore a whole school approach to LGBTQ+ inclusion in schools. It will explore some of the challenges associated with developing an LGBTQ+ curriculum and consider approaches to working in partnership with parents. The session will briefly explore transgender but this will be covered in more detail in a subsequent session.</p> <p>By the end of the session, you will be able to:</p> <ul style="list-style-type: none"> To know the implications of the 2010 Equality Act To understand the whole school approach to LGBTQ+ inclusion To consider the key barriers and solutions to implementing LGBTQ+ inclusion in primary schools 	<p>Cost</p> <p>SWIFT Members £38</p> <p>Non Members £58</p>	<p>Primary Tuesday 10 October 2023 1545 – 1715 Register HERE</p> <p>Secondary Tuesday 17 October 2023 1545 – 1715 Register HERE</p>
<p>FIND MORE INFORMATION HERE</p>	<p>Online</p>	
<p>Impact of Menopause in the Workplace</p> <p>Three in five menopausal people, usually between the ages of 45 and 55, are negatively affected at work. Almost 900,000 people in the UK left their jobs over an undefined period due to menopause symptoms. This could mean that people are leaving business “at the peak of their experience” which will “impact productivity”.</p> <p>During this course, you will look at retention of staff within a menopause friendly environment, understanding menopause discrimination and the impact for both staff and leadership, financial impact of menopause in the workplace, work life balance for staff experiencing symptoms of menopause, reasonable adjustments to support staff experiencing symptoms of menopause, work initiatives, and leadership responsibilities.</p>	<p>Cost</p> <p>SWIFT Members £65</p> <p>Non Members £90</p>	<p>Wednesday October 18 2023</p> <p>0930 - 1300</p>
<p>REGISTER HERE</p>	<p>Oldway Primary School</p>	

September 2023

EYFS & PRIMARY

★ **Early Years Subject Briefing** | Thursday 28 September 2023 | 0930 - 1530 | Online | ECSA

Book your place [HERE](#)

★ **Primary English Subject Leader Briefing** | Thursday 28 September 2023 | 1330 - 1530 | Online | Tarka

Book your place [HERE](#)

★ **Primary Science Subject Leader Briefing** | Friday 29 September 2023 | 1330 - 1545 | Online | RTSA

Book your place [HERE](#)

CROSSPHASE

★ **Safeguarding Level 3 2 Day** | Thursday 28 September 2023 | 0930 - 1630 | Newcourt Community Centre | Tarka

Book your place [HERE](#)

October 2023

EYFS & PRIMARY

★ **Early Language Programme 2023/24 | Session 1: What is Language and how is it developed?** | Wednesday 4 October 2023 | 1500 - 1700 | Monkerton Community Primary School | Cornerstone

Book your place [HERE](#)

★ **Making an Impact in EYFS: Using the Outdoors to Promote Understanding of the World** | Thursday 5 October 2023 | 0930 - 1600 | Isambad Kingdom Brunel Primary School | Cornerstone

Book your place [HERE](#)

★ **Teacher as Readers Group** | Thursday 5 October 2023 | 1600 - 1730 | Online | Ilsham English Hub/ Open University

Book your place [HERE](#)

★ **Primary Maths Subject Leader Briefing** | Tuesday 10 October 2023 | 0900 – 1200 | Online | RTSA

Book your place [HERE](#)

★ **Primary Maths Subject Leader Briefing** | Tuesday 10 October 2023 | PM Repeat 1300 - 1600 | Online | RTSA

Book your place [HERE](#)

★ **English Hub Showcase Event** | Tuesday 10 October 2023 | 0930 - 1500 | Broadclyst Primary School | Cornerstone

Book your place [HERE](#)

★ **Developing a Whole School Approach to LGBTQ+ Inclusion in Primary Schools** | Tuesday 10 October 2023 | 1545 - 1715 | Online | RTSA

Book your place [HERE](#)

★ **Trauma-Friendly Transitions: Supporting all pupils to manage change** | Wednesday 11 October 2023 | 1400 - 1630 | Countess Wear Community School | ECSA

Book your place [HERE](#)

★ **Reading for Pleasure Course 2023/24 | A Whole School Culture** | Wednesday 11 October 2023 | 0930 - 1200 | Online | Cornerstone

Book your place [HERE](#)

★ **Transforming your school reading culture** | Wednesday 11 October 2023 | 1230 - 1500 | Online | Ilsham English Hub

Book your place [HERE](#)

★ **Primary English Masterclass Series** | Thursday 12 October 2023 | 1300 - 1600 | Online | Tarka

Book your place [HERE](#)

★ **Modern Foreign Languages Masterclass** | Tuesday 17 October 2023 | 1500 - 1700 | Online | RTSA

Book your place [HERE](#)

★ **Primary Geography Masterclass Series** | Wednesday 18 October 2023 | 1300 - 1600 | Online | Tarka

Book your place [HERE](#)

☆ **Primary Assessment Masterclass Series | Wednesday 18 October 2023 | 1545 - 1715 | Online | Tarka**

Book your place [HERE](#)

☆ **Creating a Strong Reading Culture through Book Corners and Libraries | Wednesday 18 October 2023 | 1530 - 1630 | Online | Cornerstone**

Book your place [HERE](#)

SECONDARY

☆ **Developing a Whole School Approach to LGBTQ+ Inclusion in Secondary Schools | Tuesday 17 October 2023 | 1545 - 1715 | Online | RTSA**

Book your place [HERE](#)

☆ **Maths in Computer Science | Wednesday 4 October 2023 | 0930 - 1600 | Online | Exeter Maths School**

Book your place [HERE](#)

☆ **Maths in Computer Science (Repeat of 4 October) | Wednesday 18 October 2023 | 0930 - 1600 | Online | Exeter Maths School**

Book your place [HERE](#)

CROSSPHASE

☆ **Passive Intervention and Prevention Strategies (PIPS) Training | Tuesday 3 October 2023 | 0900 - 1600 | Countess Wear Community School | ECSA**

Book your place [HERE](#)

☆ **TA Training: New to the Role of Teaching Assistant | Thursday 5 October 2023 | 1230 - 1500 | Countess Wear Community School | ECSA**

Book your place [HERE](#)

☆ **Income Generation for Schools Programme | Tuesday 10 October 2023 | 0930 - 1130 | Online | ECSA**

Book your place [HERE](#)

☆ **Understanding Curriculum Intent, Implementation, and Impact | Friday 13 October 2023 | 0930 - 1530 | Oldway Primary School | RTSA**

Book your place [HERE](#)

☆ **Safeguarding Level 3 1 Day Refresher | Tuesday 17 October 2023 | 0930 - 1630 | Roundswell Community Primary School | Tarka**

Book your place [HERE](#)

☆ **Impact of Menopause in the Workplace | Wednesday 18 October 2023 | 0930 - 1300 | Oldway Primary School | RTSA**

Book your place [HERE](#)

☆ **Huh Leaders Course 'Refining the Curriculum' | Introductory Session | Thursday 19 October 2023 | 1600 - 1640 | Online | Tarka**

Book your place [HERE](#)

Professional Communities

- **School Business Management Professional Community | Thursday 5 October 2023 | 1000 - 1200 | Online | ECSA**
Book your place [HERE](#)
- **Sixth Form Professional Community | Tuesday 10 October 2023 | 1300 - 1700 | Buckfast Abbey Conference Centre | RTSA**
Book your place [HERE](#)
- **Primary Oracy Professional Community | Monday 9 October 2023 | 1600 - 1700 | Online | Tarka**
Book your place [HERE](#)
- **Estates Management Professional Community | Wednesday 11 October 2023 | 1000 - 1200 | Online | ECSA**
Book your place [HERE](#)

- **Primary SEND Professional Community | Thursday 12 October 2023 | 0845 - 1200 | Exeter Court Hotel | ECSA**
[Book your place HERE](#)
- **Secondary SEND Professional Community | Tuesday 17 October 2023 | 1400 - 1530 | Online | ECSA**
[Book your place HERE](#)
- **Equality & Diversity Professional Community | Tuesday 17 October 2023 | 1430 - 1630 | Countess Wear Community School | ECSA**
[Book your place HERE](#)

Other Events for your Diary

Upcoming DEI Events

- **#DiverseEd Conference Various dates | Online | Diverse Educators**
[Find more information HERE](#)
- **Thematic Workshops | Various dates | Online | Diverse Educators**
[Find more information HERE](#)
- **Programmes | Various dates | Online | Diverse Educators**
Leading DEIB in Schools
Leading Courageous Conversations
Leading the Diverse Curriculum
Leading Inclusive Workplaces
[Find more information HERE](#)

Remember Together: Nuclear Test Veterans | Tuesday 3 October 2023 | Online | 1000 or 1400 | Big Ideas
[Book your place HERE](#)

Please note our events are booking through our [website](#) and Eventbrite

SWIFT Partnership is sponsored by:



www.sw-ift.org.uk

