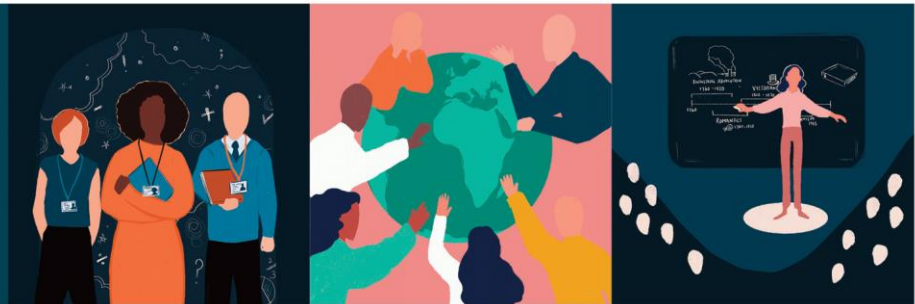




Events



ISSUE 4

Thursday 23 November 2023
Autumn Term Issue

Continuing Professional Development Offers from SWIFT & Our Partners

High quality CPD at affordable rates to enhance professional development in your school.
Access through your SWIFT Membership package at no charge and/or discounted rates.
Or as a non-member, you can access the programmes on a pay-as-you-go basis.

YOU CAN READ HERE TO FIND OUT MORE ABOUT UPCOMING EVENTS AND THANK YOU FOR FORWARDING TO YOUR COLLEAGUES

SWIFT Leadership Forum – Thursday 30 November | Online

We are inviting SWIFT members to attend this term's SWIFT Leadership Forum on Thursday 30 November 1530-1700, online. We have a great line up of speakers attending. The event can be booked [HERE](#).

Lee Elliott Major OBE (Professor of Social Mobility, University of Exeter)

Lee will set out the main arguments in his recent publication 'Equity in Education', which sets out a new equity-based approach in education to help teachers improve the prospects of under-resourced and working-class pupils.

Nick Walters (Assistant Principal, All-through Head of Inclusion, King Solomon Academy) on approaches to SEND.

Nick will cover many aspects of the King Solomon's approach to SEND, including their graduated approach, use of zones of regulation and communication with parents and carers. King Solomon Academy is a highly ambitious all-through school serving deprived communities in Westminster, Central London. Progress for all phases is well above average. Disadvantaged pupils make exceptional progress.

Matilda Browne (Co-Headteacher (Primary), Reach Academy Feltham) on Progression in Reading

Matilda will set out some of the key approaches developed at Reach, with a focus on progression in reading. Reach Academy Feltham is a high-performing All-through school serving deprived communities in Feltham in West London. Part of the Reach Foundation, Reach Academy Feltham consistently achieves exceptional progress across all phases.

The event is **free** to colleagues from SWIFT Member schools and £35 to colleagues from other schools.

Dates for your diary

- Spring Leadership Forum | Thursday 8 February 2024 | Online
- Summer Leadership Conference | Thursday 13 June 2024 | Futures Skills Centre, Exeter

Contact us

If you have any questions, please contact info@sw-ift.org.uk

Autumn Leadership Forum
Thursday 30th November 2023 | 1530-1700 | Online

Programme
1530-1615 | Part A

Lee Elliott Major OBE (Professor of Social Mobility, University of Exeter)
Lee will set out the main arguments in his recent publication 'Equity in Education', which sets out a new equity-based approach in education to help teachers improve the prospects of under-resourced and working-class pupils.

1615-1700 | Part B

OPTION 1: Nick Walters (Assistant Principal, All-through Head of Inclusion, King Solomon Academy) on approaches to SEND.
Nick will cover many aspects of the King Solomon's approach to SEND, including their graduated approach, use of zones of regulation and communication with parents and carers.
King Solomon Academy is a highly ambitious all-through school serving deprived communities in Westminster, Central London. Progress for all phases is well above average. Disadvantaged pupils make exceptional progress.

OPTION 2: Matilda Browne (Co-Headteacher (Primary), Reach Academy Feltham) on Progression in Reading
Matilda will set out some of the key approaches developed at Reach, with a focus on progression in reading.
Reach Academy Feltham is a high-performing All-through school serving deprived communities in Feltham in West London. Part of the Reach Foundation, Reach Academy Feltham consistently achieves exceptional progress across all phases.

About Leadership Forum
SWIFT is committed to bringing together leaders from all school settings in the area to connect with each other and make use of the best of local, regional and national CPD. Our Autumn and Spring Leadership Forums, as well as our Summer Conference, are some of the ways we fulfil this. Each Leadership Forum is structured around a Part A where we bring all school leaders together for a keynote speaker and a Part B with a choice of sessions.

Dates for 2023-2024

- Spring Leadership Forum | Thursday 9th Feb 2024 | Online
- Summer Leadership Conference | Thursday 13th June 2024 | Futures Skills Centre, Exeter

Target Audience
Leadership Forum is open to all school leaders from all school settings and types. We are particularly keen to welcome leaders from Devon, Plymouth and Torbay but equally welcome a warm invitation to leaders from further afield.

Fee
The event is free to colleagues from SWIFT Member schools and £35 to colleagues from other schools.

To book
Online booking form at [HERE](#)

Please book BY Wednesday 20th November noon.

Contact us
If you have any questions, please contact Nick Sheppard nick.sheppard@sw-ift.org.uk
Version 30/10/23

www.sw-ift.org.uk

REGISTER [HERE](#)

BOOK NOW | Programmes, Training and Events

Masterclasses and Longer Programmes

SWIFT, as part of its Universal CPD offer to schools, has a range of Masterclasses and Longer Programmes. These are designed to provide in-depth sets of training for leaders and teachers. They run over the course of a few terms with between 3-5 sessions. Some also have access to online modules. We are able to attract high-calibre national trainers to support current thinking and adaptation of practice over time. You will be joining colleagues from a variety of settings to create a network of people that will provide challenge and support as these programmes are applied to your own school context.



- Developing Character Education | Lyndsey Bolton
- Social Mobility Masterclass (Secondary and Primary) | Sonia Blandford
- Primary English Writing Masterclass | Debra Myhill

REGISTER [HERE](#)

Professional Communities

Professional Communities bring colleagues together to network, connect with leading practice, hear from expert speakers, and provide mutual support. Held termly, our team of Professional Community Leads provide a high level of expertise, enabling the design of high-quality agendas, recruitment of expert speakers and the identification of local expertise. Contributors include leading national voices and key officials from national agencies, including Ofsted and researchers from the Education Endowment Fund (EEF).



- School Business Management
- Primary Oracy
- Sixth Form
- Estates Management
- Primary SEND
- Secondary SEND
- Equality & Diversity
- Primary Design & Technology
- Secondary Leaders
- PSHE
- Primary Geography & History
- RE
- Primary PE
- Primary Science
- Primary Art
- Safeguarding
- Secondary Computing
- Secondary Science
- Primary Curriculum and Assessment
- Secondary Curriculum, Assessment and Data

FIND MORE INFORMATION [HERE](#)

Primary Subject Leader Briefings

Covering Early Years, Maths, English and Science, Subject Leader Briefings for primaries are designed to provide termly updates, guidance and examples of effective practice, drawing on area and national sources. Briefings are delivered by experts and planned in co-ordination with our Subject Masterclasses and Professional Communities.



- Early Years with Early Excellence
- Science with Allie Beaumont
- English with Danni Cooke | Ilsham English Hub Lead
- Maths with Adam Peters | CODE Maths Hub

No charge for SWIFT members.

REGISTER [HERE](#)

LSSW Leadership Study Visit - Spring 2024

Monday 29th - Wednesday 31st January 2024

There are limited places available which will be allocated on a first come basis.

Building on the exceptional feedback from previous study visits, we are delighted to be able to return to visit Reach Academy Feltham and King Solomon Academy in London. These are outstanding, high performing settings that provide excellent host schools for our study visits. Your leadership learning will be further developed through structure coaching sessions before and after the visits.

LSSW subsidises 80% of programme costs. The cost to delegates, including travel, meals and accommodation is £175. LSSW also provide a Leadership Grant which can be used by eligible schools to cover the cost of supply.

**Booking
deadline**

**Friday 15
December 2023**

Register [HERE](#)

FIND MORE INFORMATION [HERE](#)

NPQ Spring Cohort | Application Window | Open Now!

The application window for the Spring Cohort of National Professional Qualifications is open **now until 15 January**. The Spring cohort of National Professional Qualifications will begin in late February 2024 and all interested colleagues must complete an [application form](#) which is screened by our selection committee as part of the initial registration process. **This is likely to be the last DfE funded cohort of NPQs and so please encourage any interested colleagues to apply to ensure they don't miss out on this opportunity.**

Cost

DfE Funded

Programmes start Spring 2024
Register [HERE](#)

FIND MORE INFORMATION [HERE](#)

Parental Leave Group Coaching



Fully-funded for state school colleagues in the South West thanks to Balcarras Trust, Pate's Grammar School, Swindon and Wiltshire TSH, SWIFT, and One Cornwall TSH Partnership

Join The MTPT Project this winter for our December Return to Work workshop - a highly supportive session aimed specifically at colleagues preparing to return to work following a period of maternity, adoption or shared parental leave.

During this 90-minute workshop participants will learn about their legal entitlements as returning parents and the best practice they can request from schools to support their return. The workshop offers the headspace to consider organisational logistics at home and at school, and prepare practically and emotionally for a confident return.

These are baby-friendly events facilitated by Emma Sheppard, Founder of The MTPT Project, the UK's charity for parent-teachers. Find out more and claim your fully funded place using the promo code **SW23** on Eventbrite.

FIND MORE INFORMATION [HERE](#)

December 2023 / January 2024

EYFS & PRIMARY

☆ **KS1 Cross-School Writing Moderation** | Friday 1 December 2023 | 1315 - 1530 | Oldway Primary School | RTSA
Book your place [HERE](#)

☆ **Developing a Whole School Approach to LGBTQ+ Inclusion in Primary Schools** | Tuesday 5 December 2023 | 1545 - 1715 | Online | RTSA
Book your place [HERE](#)

☆ **KS2 Cross-School Writing Moderation** | Wednesday 6 December 2023 | 1315 - 1530 | Oldway Primary School | RTSA
Book your place [HERE](#)

☆ **Primary English Masterclass Series** | Wednesday 10 January 2024 | 1300 - 1600 | Online | Tarka
Book your place [HERE](#)

☆ **Early Years Subject Leader Briefing** | Thursday 11 January 2024 | 0930 - 1530 | Online | ECSA
Book your place [HERE](#)

☆ **Character Education Masterclass Series** | Thursday 18 January 2024 | 1300 - 1600 | Online | Tarka
Book your place [HERE](#)

☆ **Primary Science Subject Leader Briefing** | Friday 19 January 2024 | 1330 - 1545 | Online | RTSA
Book your place [HERE](#)

SECONDARY

☆ **AQA Combined Science GCSE Feedback on the 2023 Examinations** | Monday 8 January 2024 | 0930 - 1530 | Oldway Primary School | RTSA
Book your place [HERE](#)

☆ **AQA Chemistry GCSE Feedback on the 2023 Examinations** | Tuesday 9 January 2024 | 0930 - 1530 | Oldway Primary School | RTSA
Book your place [HERE](#)

☆ **AQA Geography GCSE Feedback on the 2023 Examinations** | Wednesday 10 January 2024 | 0930 - 1530 | Oldway Primary School | RTSA
Book your place [HERE](#)

☆ **AQA Economics A-Level Feedback on the 2023 Examinations** | Monday 15 January 2024 | 0930 - 1530 | Oldway Primary School | RTSA
Book your place [HERE](#)

☆ **AQA English Literature GCSE Feedback on the 2023 Examinations** | Tuesday 16 January 2024 | 0930 - 1530 | Oldway Primary School | RTSA
Book your place [HERE](#)

☆ **AQA MFL (French) GCSE Feedback on the 2023 Examinations** | Wednesday 17 January 2024 | 0930 - 1530 | Oldway Primary School | RTSA
Book your place [HERE](#)

☆ **AQA Biology A-Level Feedback on the 2023 Examinations** | Friday 19 January 2024 | 0930 - 1530 | Oldway Primary School | RTSA
Book your place [HERE](#)

☆ **AQA English Language GCSE Feedback on the 2023 Examinations** | Monday 22 January 2024 | 0930 - 1530 | Oldway Primary School | RTSA
Book your place [HERE](#)

☆ **Developing a Whole School Approach to LGBTQ+ Inclusion in Secondary Schools** | Tuesday 23 January 2024 | 1545 - 1715 | Online | RTSA
Book your place [HERE](#)

☆ **AQA Religious Studies GCSE Feedback on the 2023 Examinations** | Wednesday 24 January 2024 | 0930 - 1530 | Oldway Primary School | RTSA
Book your place [HERE](#)

☆ **AQA Mathematics A-Level Feedback on the 2023 Examinations** | Friday 26 January 2024 | 0930 - 1530 | Oldway Primary School | RTSA
Book your place [HERE](#)

☆ **AQA Physics GCSE Feedback on the 2023 Examinations** | Monday 29 January 2024 | 0930 - 1530 | Oldway Primary School | RTSA
Book your place [HERE](#)

☆ **AQA Mathematics GCSE Feedback on the 2023 Examinations** | Wednesday 31 January 2024 | 0930 - 1530 | Oldway Primary School | RTSA
Book your place [HERE](#)

CROSSPHASE

☆ **SWIFT Autumn Leadership Forum** | Thursday 30 November 2023 | 1530 - 1700 | Online | SWIFT
Book your place [HERE](#)

☆ **Huh Leaders Course 'Refining the Curriculum'** | Thursday 30 November 2023 | 1600 - 1700 | Online | Tarka
Book your place [HERE](#)

☆ **Understanding Sensory Processing Difficulties** | Tuesday 5 December 2023 | 0930 - 1230 | Countess Wear Community School | ECSA
Book your place [HERE](#)

☆ **Safeguarding L3 Refresher** | Thursday 11 January 2024 | 0930 - 1630 | Newcourt Community Centre, Exeter | Tarka
Book your place [HERE](#)

☆ **What is Dyslexia and How Do We Support It In The Classroom?** | Friday 12 January 2024 | 1330 - 1530 | Oldway Primary School | RTSA
Book your place [HERE](#)

☆ **Social Mobility Masterclass Series** | Wednesday 17 January 2024 | 1400 - 1630 | Online | Tarka
Book your place [HERE](#)

☆ **Let's Talk Menopause** | Wednesday 24 January 2024 | 0930 - 1130 | Online | RTSA
Book your place [HERE](#)

Professional Communities

- **Estates Management Professional Community** | Wednesday 29 November 2023 | 1300 - 1500 | Online | ECSA
Book your place [HERE](#)
- **Equality & Diversity Professional Community** | Tuesday 23 January 2024 | 1430 - 1630 | Online | ECSA
Book your place [HERE](#)
- **SBM Professional Community** | Thursday 25 January 2024 | 1000 - 1200 | Online | ECSA
Book your place [HERE](#)
- **PSHE Professional Community** | Wednesday 31 January 2024 | 1330 - 1530 | Countess Wear Community School | ECSA
Book your place [HERE](#)

Other Events for your Diary

Upcoming DEI Events

- **#DiverseEd Conference Various dates | Online | Diverse Educators**
Find more information [HERE](#)
- **Thematic Workshops | Various dates | Online | Diverse Educators**
Find more information [HERE](#)
- **Programmes | Various dates | Online | Diverse Educators**
Leading DEIB in Schools, Leading Courageous Conversations, Leading the Diverse Curriculum, Leading Inclusive Workplaces
Find more information [HERE](#)

Jurassic Maths Hub

- **A variety of opportunities for both Primary and Secondary teachers**
Find more information [HERE](#)

Cambridge Nationals Events

- **Various CPD opportunities**
Find more information [HERE](#)

Department for Education - Senior Mental Health Lead Training

- **Senior mental health lead training** will equip your mental health lead with the knowledge and skills to implement an effective whole school or college approach to mental health and wellbeing. All state schools and colleges can [claim a £1,200 grant](#) to fund DfE quality assured mental health lead training to help them develop their school or college approach to promoting and supporting the mental health and wellbeing of pupils and staff.
Find more information [HERE](#)

Level 4 Apprenticeship for Specialist Teaching Assistants

- A Trailblazer Group has been meeting regularly over the last year or so to develop a Level 4 Apprenticeship for Specialist Teaching Assistants. The group is now very pleased to invite you to take part in a very short employer survey which takes only 3-4 minutes to complete.
The link can be found at <https://forms.office.com/e/TWkQRu7QaH>
Please feel free to share this survey with any interested colleagues who may also value making a contribution to the survey.
If you have any questions please feel free to contact one of the co-chairs of the group, either Diane Swift (d.swift@knste-shaw.org.uk) or Andy Ogden (andy.ogden@tarkatrust.org.uk).
Complete the survey [HERE](#)

Exeter Maths School – Computing CPD

- **Primary Autumn Term CPD Offer**
Find more information [HERE](#)
- **Secondary Autumn Term CPD Offer**
Find more information [HERE](#)

Empowering Early Years CPD

- **Utilising Loose parts to enable & enhance learning potential | 29 November 2023 | Online**
- **I Can('t) do it! Enabling Growth Mindset resilience skills in early years | 4 December 2023 | Online**
- **Supporting Quiet, shy and Anxious children: enabling confidence skills | 11 December 2023 | Online**
- **Self Regulation skills Basics - why relational educational approaches work! | 15 January 2024 | Online**
- **Enabling challenge & risk in provision to support Executive functioning skills (including attention, working memory and SR skills) | 22 January 2024 | Online**
Find more information [HERE](#)

Ilsham English Hub – Free CPD

- **Various CPD opportunities**
[Find more information HERE](#)

Plymouth Marjon University Short Courses

- **Speech and Language Therapy (SLT) for Schools | Access Anytime | Online**
[Find more information HERE](#)

Cornerstone CPD

- **Upcoming CPD Events December 2023 – January 2024**
[Find more information HERE](#)

Please note our events are booking through our [website](#) and [Eventbrite](#)

SWIFT Partnership is sponsored by:

